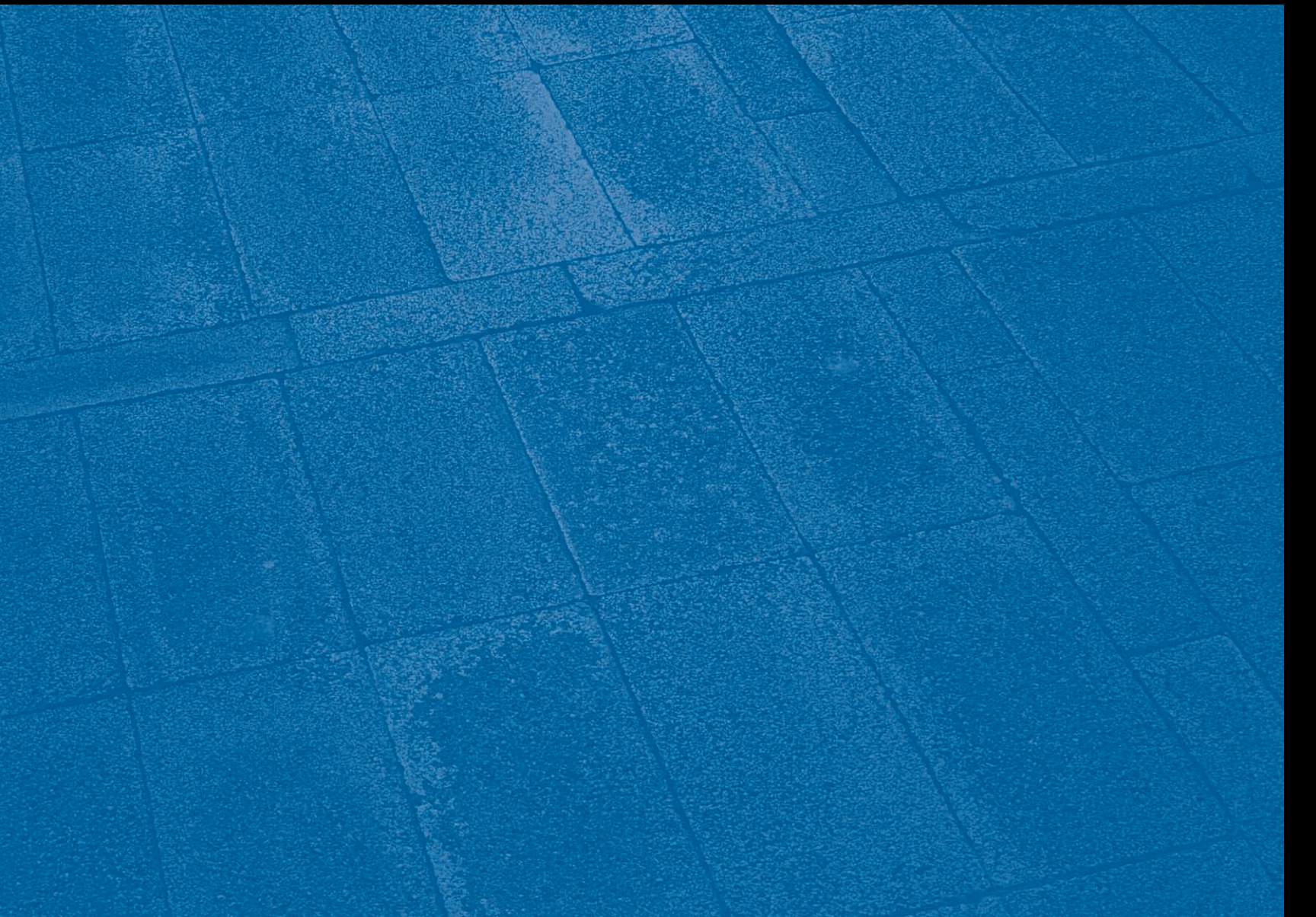




**Alan Shintani Inc.**  
GENERAL CONTRACTOR BC 13068





# | COMMITMENT |



**U.S. ARMY CORP OF ENGINEERS**  
RICHARDSON POOL  
SCHOFIELD BARRACKS – RENOVATION

## OUR UNCOMPROMISING VALUES

For more than two decades, Alan Shintani, Inc. has earned a solid reputation in Hawaii for providing quality and cost-effective construction services. Since its establishment in 1984, the licensed general construction company has been providing optimum solutions by offering a range of quality general contractor services and construction management for homes, commercial buildings and government projects in a timely and cost-efficient manner.

Upholding our company philosophy of “quality construction of the highest standards, on time and within budget,” Alan Shintani, Inc. offers a unique combination of highly respected construction services and hands-on professionalism. One of the major foundations for these services is Alan Shintani, Inc.’s experienced and dedicated staff, a group of administrative and operational team players who are committed to our company’s goals. It is these standards of quality that have made Alan Shintani, Inc. a leader in the construction industry.

Alan Shintani, Inc. has a proven track record of reliability and integrity that guarantees our clients’ needs are met and their expectations are exceeded. Our company continuously strives to succeed in all of its construction endeavors by offering innovative and consistent means of construction services.







## OUR BEGINNINGS

In 1979, husband and wife Alan and Jennifer Shintani started a small business called Home Projects Construction, initially focusing on residential repairs and remodeling as a source of revenue. In the early years of our company, the customer base was built through referrals from satisfied clients. Soon, however, it was obvious our company had to expand its labor force to fill the demand for more homes and to meet the needs of the rapidly growing list of referred customers.

In 1984, Home Projects Construction was expanded to form present-day Alan Shintani, Inc., which has grown into a highly respected member of Hawaii's construction industry, offering an extensive range of cost-effective services. To date, Alan Shintani, Inc. services a

wide range of clientele and takes pride in its comprehensive experience and expertise.

The industry services offered by Alan Shintani, Inc. go beyond what most would expect from a general construction company. Alan Shintani, Inc. offers demolition and site work, new residence construction, residential remodeling, commercial renovations, new commercial structures, and special construction.

With a wide range of flexible and top-quality in-house capabilities and the ability to provide supportive subcontractors as well as a design-build team that brings in the project on time and within budget, Alan Shintani, Inc. is the solution to just about any construction project.



HONOLULU POI COMPANY



# QUALITY

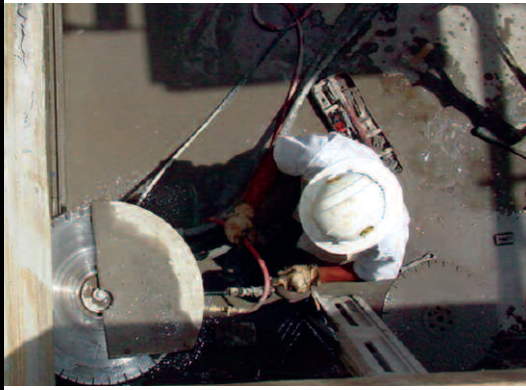


## **THE CHAPEL AT THE ROYAL MAUSOLEUM**

The Royal Mausoleum is considered by many as the most sacred grounds in Hawaii. Photos show the interior & exterior after the restoration. Originally built in 1862, the chapel was restored in 1986.







## GENERAL CONTRACTING SERVICES

In addition to building a strong foundation by utilizing quality construction methods, Alan Shintani, Inc. has been recognized for our general contracting services. Our company has an excellent follow through record contracting assignments, negotiating the best contract or bid for our clients' project. Our company makes sure the job gets done on time and within budget.

Specialty licenses allow Alan Shintani, Inc. to perform the following phases in-house:

- C-5 Cabinet, millwork, carpentry remodeling and repair

- C-6 Carpentry framing
- C-12 Drywall
- C-17 Excavation
- C-24 Building moving and demolition
- C-31 Masonry and concrete
- C-42 Roofing

The majority of Alan Shintani, Inc.'s projects are contracted by the Federal government. Our projects include several of Hawaii's military bases including Pearl Harbor, Ft. Shafter, Schofield Barracks, Tripler Hospital and Hickam Air Force Base.

## PRECONSTRUCTION SERVICES

When starting a project, it is not unusual for clients to have lots of questions. Alan Shintani, Inc. has the in-house capability to provide comprehensive preconstruction consulting services. Our company takes the time to fully understand the client's project objectives and requirements by assessing and conducting conceptual/detailed budgets, feasibility studies, site survey, and construction system selection.

Alan Shintani, Inc. also coordinates with services from adjunct firms of architects, engineers and a wide range of consultants from various disciplines and specialties to ensure that construction conforms to design criteria, quality and required details. Our company also has the combined in-house construction management personnel, quality control specialists and administrative personnel to produce a customized design package for each client.



WAIKANE VALLEY  
IMPACT AREA-SITE WORK



# DIVERSITY



▲ **U.S. ARMY CORP OF ENGINEERS**  
NEW VISITOR CONTROL CENTER  
TRIPLER ARMY MEDICAL CENTER

**U.S. ARMY CORP OF ENGINEERS** ►  
LIFE SKILLS CLINIC  
HICKAM AIR FORCE BASE

▼ **U.S. ARMY CORP OF ENGINEERS**  
RICHARDSON POOL  
SCHOFIELD BARRACKS - RENOVATION







## CONSTRUCTION SERVICES

General construction services are the core of Alan Shintani, Inc. Whether working to acquire and complete Federal projects or projects from the private sector and local Hawaii government, our team at Alan Shintani, Inc. goes above and beyond standard means to ensure that projects are completed in an efficient and first-rate manner. Our company consists of qualified professionals, field

personnel in-house, subcontractors and consultants, who work together to ensure paramount construction service.

Alan Shintani, Inc. provides broad choices when it comes to construction services, including plans and estimates, carpentry and masonry, residential, light commercial, demolition, remodeling and restoration and historical preservation.

## DESIGN/BUILD

Alan Shintani, Inc. has the proven track record and experience to initiate, coordinate and manage successful design-build construction projects. In 2003 and 2004, Alan Shintani, Inc. received the Building Industry Association (BIA) Renaissance Grand Award for Major Repairs of Quarters A and C, Hale Ali'i, Pearl Harbor. This award recognizes excellence in construction design and performance in the renovation on a historical building.

Consultation is available for a variety of project needs ranging from architectural, civil, structural, mechanical, and electrical engineering disciplines within our company's home office. Alan Shintani, Inc. employs a staff of personnel with innovative design experience and maintains a working relationship with several design and engineering firms to form unique collaborations. These collaborations ensure clients receive inventive ideas that can be implemented into a finished quality product.



LIFE SKILLS CLINIC, HICKAM AIR FORCE BASE



# SERVICE



**US NAVY - ROICC, PEARL HARBOR**  
QUARTERS A, HALE ALI'I  
PEARL HARBOR - RENOVATION





# RESULTS



## OUR SAFETY APPROACH

Alan Shintani, Inc.'s emphasis on "safety first," is backed by our superior safety policy. This policy enforces strict safety requirements and health standards such as jobsite safety meetings, continuing education for safety training and certification, and maintaining qualified safety officers and accessibility of resources. At Alan Shintani, Inc., the importance of safety not only protects our employees and sub-contractors, but also assures that we meet project deadlines in a timely and secure manner.

General workplace inspections are also conducted to assure the safety and well being of our workers. Employee input on safety issues is essential to Alan Shintani, Inc.'s safety approach. Our programs to maintain a high standard of safety have received numerous awards from the Army Corp of Engineers, the Resident Officer in Charge of Contracts/Navy and Hawaii Occupational Safety and Health. The American Society of Safety Engineers also presented Alan Shintani, Inc. with 1st Place Excellence in Safety and Health for a Small Size Company for 2004 at the Pacific Rim Safety and Health Conference.

## OUR OHANA

Without our experienced and dedicated staff, a group of administrative and operational team players who are committed to the company's goals, Alan Shintani, Inc. would not be the leader in Hawaii's construction trade that it is today. Teamwork is one of Alan Shintani, Inc.'s keys to success. Each employee is a valuable member of the Alan Shintani, Inc. team and serves as one of the major foundations for the exceptional services our company provides.

An "open voice" policy at Alan Shintani, Inc. allows all employees, subcontractors, designers, consultants, and customers to actively interact and express innovative or different ideas that facilitate more effective ways for design and/or construction, savings in cost and/or time, better coordination, higher workmanship quality, and safer operations. Alan Shintani, Inc.'s policy combined with our qualified staff has not only allowed our company to maintain its professional reputation, but to accelerate our company's growth as well.





**Alan Shintani inc.**  
GENERAL CONTRACTOR BC 13068

94-409 Akoki Street  
Waipahu, Hawaii 96797  
(808) 841-7631  
[www.alan-shintani.com](http://www.alan-shintani.com)

